

2023 – 2024 Academic Year

Annual Security and Fire Safety Report (ASR)

Prepared by the Department of Public Safety
Includes Crime Statistics for Calendar Years (CYs) 2020, 2021 & 2022



TABLE OF CONTENTS

Section Title	Page(s)
Title Page	1
Table of Contents	2
Letter from the Director of Public Safety	5
Department of Public Safety Mission Statement	6
Campus Security Authority (CSA)	7
Annual Security Report	9
Reporting Crimes and Other Emergencies	9
Rave Guardian	11
Voluntary, Confidential Reporting	13
Reporting to the University of South Carolina Police	13
Reporting to Other Campus Security Authorities (CSAs)	14
Other Campus Security Authorities on USCB	14
It's Up to Each of Us	15
Preparation of the Annual Security Report and Disclosure of Crime Statistics	16
The University of South Carolina Beaufort Department of Public Safety	17
The University of South Carolina Beaufort Public Safety Sections	21
Training	21
Emergency Management	22
Emergency Notification (Shark Alert) & Timely Warnings	22
Alerting the Campus Community	22
Severe Weather and Emergency Management	24
Emergency Response and Evacuation Procedures	25
Drills, Exercises and Training	26
Emergency Notification	26
Procedures Used to Notify the Campus Communities	26
Confirming the Existence of a Significant Emergency or Dangerous Situation and Initiating the Emergency Notification System	27
Security of and Access to University Facilities	27
Special Considerations for Residence Hall Access	28
General Campus Security	29
Security Considerations for the Maintenance of Campus Facilities	30
Campus Security Policies, Crime Prevention & Safety Awareness Programs	31
Sexual Assault and Gender Violence/Title IX Coordinator	34
Sexual Assault	34
VAWA – Campus Sexual Violence Elimination Act	37

TABLE OF CONTENTS

Section Title	Page(s)
Resources for Victims	40
Hopeful Horizon	41
Victims' Rights	41
USCB Counseling Resources	42
Emergency Contacts	42
Student Of Concern	43
Resources for Dealing with Student of Concern	44
Drug and Alcohol Resources	45
Additional Resources	46
Missing Students	47
Crime and Fire Log	49
Alcohol and Drug Policy	49
Weapon Possession/Annual Disclosure of Crime Statistics	51
Definition of Reportable Crimes Federal Definitions	52
Geography of Definitions from Clery Act	56
Clery statistics for 2020,2021,2022	58
Criminal Offense Report Table Bluffton Campus	59
Arrest and Disciplinary Referrals Table Bluffton Campus	60
VAWA Offense Report Table Bluffton Campus	61
Hate Crime Report Table Bluffton Campus	61
Unfounded Report Table Bluffton Campus	62
Criminal Offense Report Table Beaufort Campus	63
Arrest and Disciplinary Referrals Table Beaufort Campus	64
VAWA Offense Report Table Beaufort Campus	65
Hate Crime Report Table Beaufort Campus	65
Unfounded Report Table Beaufort Campus	66
Criminal Offense Report Table Hilton Head Island Campus	67
Arrest and Disciplinary Referrals Table Hilton Head Island Campus	68
VAWA Offense Report Table Hilton Head Island Campus	69
Hate Crime Report Table Hilton Head Island Campus	70
Unfounded Report Table Hilton Head Island Campus	71
Annual Fire Safety Report	72
Fire Drills	73
Fire Safety System	73
Fire Evacuation	74
Cooking and Kitchens	76
Annual Fire Safety Report 2020	77

TABLE OF CONTENTS

Section Title	Page(s)
Annual Fire Safety Report 2021	78
Annual Fire Safety Report 2022	79
AEDs on Campus	80
USCB Campus Map Bluffton Campus	81
USCB Campus Map Beaufort Campus	82
USCB Campus Map Hilton Head Island Campus	83
USCB Hardeeville Athletic Complex	84

University of South Carolina Beaufort Community:

The Department of Public Safety is responsible for ensuring the safety and security of the University of South Carolina Beaufort (USCB) community from all hazards, including crime. The USCB Police Department (USCBPD) is the primary department for providing security and law enforcement services to USCB.

On behalf of the members of the University of South Carolina Beaufort Police Department, I want to thank you for your interest in our Annual Security Report. We publish this report because it contains valuable information for our campus community and in order to comply with the Jeanne Clery Act. We encourage you to review the information available in this report as well as information about our department and the services that we provide. You will also find information on security policies and procedures, crime statistics, and ways you can deter crime on campus. We partner with many other Departments in the University and many external law enforcement agencies to ensure a cohesive response to any emergency that may arise. It is our goal to provide the best public safety support to the University community and to ensure a campus that is a safe place to live, work, and study.

I encourage you to study this information and encourage you to see how you can assist us in preventing and protecting our wonderful University. If you have any questions or comments regarding the information contained in this report, please contact Lt. Caleb Watts, Clery Compliance Officer, at 843-208-8916 or cw92@uscb.edu.

Erik Salus

Director of Public Safety

Chief of Police

esalus@uscb.edu

843-208-8912

The University of South Carolina Beaufort Police Officers are sworn and certified officers with comprehensive arrest powers in the state of South Carolina and have the authority to enforce all state laws throughout the state. USCB Police Officers are also appointed and commissioned as State Constables by the Governor of South Carolina as provided by Title 23, Chapter 1, Article 60, *Code of Laws of South Carolina*, 1976, as amended.

MISSION STATEMENT

“The University of South Carolina Beaufort Police Department provides professional law enforcement support to the University students, staff and faculty in order to provide a safe and secure environment in which to study, learn, and work through the efficient use of resources.”

Goals of the University Police

- Increase police coverage for the University community by expanding programs currently offered and adding new services and staff as required.
- Increase communications by routinely publishing information on crime prevention and awareness, and by providing educational programs to increase the community’s knowledge and safety as it relates to police services.
- Meet the challenges of maintaining and improving law enforcement services, which will be needed in a rapidly growing University, by aggressively seeking, employing and retaining high-quality law enforcement professionals.
- Train all Officers, on a continuous basis, to be knowledgeable of the changing laws and procedures that law enforcement Officers deal with on a daily basis.



- Maintain and upgrade fire safety systems, alarms and Closed-Circuit Television Systems (CCTV), and patrol vehicles.
- Emergency Management

Campus Security Authority (CSA)

Even at Universities with a police department on campus, a student who is the victim of a crime may be more inclined to report it to someone other than campus police. For this reason, the Clery Act requires all Universities to collect crime reports from a variety of individuals and organizations that Clery considers to be “Campus Security Authorities” or “CSA”.

The function of a campus security authority is to report to the official or office designated by the University to collect crime report information (USCB Public Safety) those allegations of Clery Act crimes that he or she receives in their capacity as a CSA. The CSA is not responsible for determining whether a crime took place that is the function of the USCB Police Department. CSAs are also not responsible for apprehending the alleged perpetrator or convince a victim to contact law enforcement if the victim chooses not to do so. Additionally, CSAs are not responsible for investigating or reporting incidents that they overhear students talking about in a hallway conversation; that a classmate or student mentions during an in-class discussion; that a victim mentions during a speech, workshop, or any other presentation; or that a CSA learns in an indirect manner.

In most cases it is possible for a CSA to fulfill their responsibilities while still maintaining victim confidentiality. Alerting responsibilities can usually be met without disclosing personally identifiable information. A CSA report does not need to automatically result in the initiation of a police report or disciplinary investigation if the victim does not desire to pursue this action.

Individuals whose functions involve relationships with students or have significant responsibilities for students and/or campus activities are considered a CSA. Individuals may be designated as a CSA based on whether they perform the following functions:

- Their official job responsibilities involve significant interaction with students and/or campus activities.

- They serve as informal or unofficial mentors to students.
- They serve as a member in an office or on a committee to whom students are instructed and informed to report or discuss crimes, allegations of crimes, and other troubling situations.
- They have oversight for disciplinary procedures.

A **Professional Counselor** is defined as a person whose official responsibilities include providing mental health counseling to the members of the University's community and who is functioning within the scope of his/her license or certification. Professional Counselors are exempt from disclosing reported offenses. Professional Counselors must be acting in the role of Professional counselors to qualify for exemption.

There are no formal procedures that require professional counselors to inform persons they are counseling of any procedures to report crimes on a voluntary and confidential basis for inclusion in the ASR.



Annual Security Report (ASR)

The current ASR can be located at https://www.uscb.edu/public_safety/clery_report.html (Public Safety: Clery Report or a paper copy can be viewed at the Public Safety Office, 13 South Campus Drive (Beaufort Building), Bluffton, SC 29909

REPORTING CRIMES AND OTHER EMERGENCIES

The University of South Carolina Beaufort has a number of ways for campus community members and visitors to report crimes, serious incidents, and other emergencies to appropriate University officials. Regardless of how and where you decide to report these incidents, it is critical for the safety of the entire University community that you immediately report all incidents to the University of South Carolina Beaufort Police at 843-208-8911 or 911 to ensure an effective investigation and appropriate follow-up actions, including possible issuance of a Shark Alert or Timely Warning. The University of South Carolina Beaufort Department of Public Safety (Police) is located in the Beaufort Dorm on the 1st Floor at 13 South Campus Drive.

Members of the University community must assume responsibility for their own personal safety and the security of their personal property. The following are suggestions to provide you guidance to protect yourself against becoming the victim of a crime:

- Report all suspicious incidents and persons to the USCB Police immediately.
- Never take your personal safety for granted.
- Avoid walking at night alone if possible. Utilize USCB Police escorts by calling 843-208-8911.
- Limit your alcohol consumption and leave social functions that are too loud, too crowded, or that have too many people drinking in excess.
- Carry only small amounts of cash.
- Do not leave valuables unattended.
- Carry your keys/card with you at all times and do not lend them to anyone.
- Lock up bicycles with a bike lock.

- Lock car doors and do not leave valuables in view.
- Make sure your residence hall door shuts and is locked when you leave along with your bedroom.
- Lock your windows.
- Engrave numbers on your valuables and inventory your items. Keep a list of serial numbers of expensive items.

Individuals are responsible for being aware and complying with the University policies/procedures and applicable local, state and federal laws. USCB students, faculty, staff, contractors, and visitors are encouraged to accurately, voluntarily and promptly report crimes, sexual assaults, emergencies and potential threats or risk to the University. Crimes and other emergencies should be reported to the USCB Police Department at (843) 208-8911 (Bluffton Campus), (843) 521-3189 (Beaufort Campus) (843) 208-4911 (Hilton Head) or 911 for an emergency. Criminal or suspicious acts and emergencies should be reported to the USCB Police immediately in person or by telephone.

The USCB Police Department is located in the Beaufort Dorm, 1st Floor, 13 South Campus Drive (Bluffton Campus), The Center for Arts (Beaufort Campus) and the 1st Floor of the Hilton Head Campus. The USCB Police Station in Bluffton is available 24 hours a day, seven days a week and are always available to answer questions or respond to take a complaint.

The USCB Police Department encourages everyone who has become a victim of a crime to come forward and report it to the police. However, on occasion and depending on the nature of the crime, the victim may refuse to press charges. This is the victim's option. Just because a report is filed with the police department does not mean that criminal charges have to be filed. Students also have the option of contacting other University resources, such as Director of Housing and Judicial Affairs, Director of Student Life, Coaches, Faculty advisors or counseling services.

RAVE Guardian



During 2022 the Department of Public Safety unveiled a new safety application known as RAVE Guardian.

How to [Get the App.](#)

The RAVE Guardian Safety App is available on the [Apple App Store](#) for iPhones and [Google Play](#) for Android devices.

What is RAVE?

A mobile app. that turns any cell phone into a personalized protection network. It connects you directly with USCB-PD during an emergency and provides important information instantly.

Create a Detailed Caller Profile

Students, faculty and staff can set up complete profiles in RAVE Guardian. By providing information about any medical conditions, your course schedule, addresses, campus ID photo and other critical data, it's easier for USCB-PD to find and help you in case of an emergency. Make sure you use your sc.edu email address when registering.

Make Fast-Response Panic Calls

These instantly connect with USCB-PD. If the call is placed to USCB-PD, Rave Guardian automatically delivers your complete caller profile to our Department of Public Safety. The app also sends GPS coordinates pinpointing where the call was made. Help will be sent depending on the nature and location of the call; it could be USCB-PD or local police, fire or emergency medical assistance.

If we can't reach you after the call comes in, we'll use the GPS coordinates the app sends us and your profile picture to locate you.

For calls originating off campus, we'll notify the appropriate local jurisdiction if we need help searching for you.

When you are not near campus and use the 911 Emergency option, the full details of your profile and your GPS information may not be available, but the app. can still connect you with the nearest 911 dispatch center.

Set Safety Networks & Timers

The app. let's you set safety timers notifying people you trust (“guardians”) of your whereabouts. Simply set the timer before you leave, inputting information about your destination and/or route and the approximate amount of time you think it will take you to get there. When you arrive, deactivate the timer. If you don't deactivate it in time, the app. will prompt to do so. If it is not deactivated, your “guardian” will be notified. If you've selected USCB-PD as your guardian, our Department of Public Safety will attempt to locate you. If they cannot, an officer will be dispatched to check on you.

Make Anonymous Crime Tips

You can send crime tips and pictures using the app. USCB officers will assess the information. If help is needed immediately, an officer will be sent. Issues that aren't police matters — street light outages or water line breaks — will be forwarded to the right agency. Tips also will be forwarded to outside police agencies if appropriate.

Voluntary, Confidential Reporting

If crimes are not reported, little can be done to help other members of the community from also being victims. We encourage University community members to report crimes promptly and to participate in and support crime prevention efforts. The University community will be much safer when all community members participate in safety and security initiatives.

If you are the victim of a crime or want to report a crime you are aware of, but do not want to pursue action within the University or criminal justice system, we ask that you consider filing a voluntary, confidential report. Depending on the circumstances of the crime you are reporting, you may be able to file a report while maintaining your confidentiality. The purpose of a confidential report is to comply with your wish to keep your personally identifying information confidential, while taking steps to ensure your safety and the safety of others. The confidential report allows the University to compile accurate records on the number and types of incidents occurring on campus. Reports filed in this manner are counted and disclosed in the ASR. In limited circumstances, the Department may not be able to assure confidentiality and will inform you in those cases.

Anyone may call the USCB Police at (843) 208-8911 (Bluffton), (843) 521-3189 (Beaufort) or (843) 208-4911 (Hilton Head) to report information. Callers may remain anonymous.

Reporting to the University of South Carolina Beaufort Police

We encourage all members of the University community to report all crimes and other emergencies to USCB Police in a timely manner. USCB Police are available by phone or in person twenty-four hours a day at 13 South Campus Drive. Though there are many resources available, USCB Police should be notified of any crime, whether or not an investigation continues, to assure the University can assess any and all security concerns and inform the community if there is a significant threat to the University community.

Reporting to Other Campus Security Authorities

Although the reporting of criminal activity directly to the University Police is encouraged, crimes may also be reported to Campus Security Authorities (CSA). Campus Security Authorities are members of the University community whom students, faculty, or staff may report alleged criminal offences to, which they may not otherwise wish to report to the University Police or need assistance doing so. Reports of the types of crimes that CSA's needs to send to the University Police are those listed in the Annual Crime Statistics found in this document. CSA's are University officials who have responsibility for campus security, enforcement or compliance and who have significant responsibility for student and campus activities. CSAs forward non-identifying information to the University Police for inclusion in the ASR, regardless of whether or not the victim chooses to file a report with law enforcement or press charges.

Campus Security Authorities to whom crime reports maybe made:

- Director of Housing and Judicial Affairs
- Director of Student Life
- Resident Director
- Director of Athletics
- Coordinator for Recreation, Fitness, and Intramurals
- All Athletic Team Coaches
- Faculty advisors to student groups
- Resident Advisors or Assistants (RA's)

The function of a Campus Security Authority is to forward crime reports to your campus police and keep documentation of all crime reports of those allegations of Clery Act crimes that he/she concludes were made in good faith. CSA's will notify the University Police Clery Compliance Officer in a timely manner of reports they have received. CSA's may send reports to the USCB Police Clery Compliance Officer at cw92@uscb.edu or by inter-

office mail. Students, Faculty and Staff, if for whatever reason you choose not to make an official police report with the University Police but feel the need to let someone know what happened, please take advantage of this program. Making the University safer requires all of us working together.

It's Up to Each of Us

The University of South Carolina Beaufort takes great pride in the community and offers students, faculty and staff many opportunities. This community is a great place to live, learn, work and study; however, this does not mean that the campus community is immune from all of the other unfortunate circumstances that arise in other communities. With that in mind, The University of South Carolina Beaufort has taken progressive measures to create and maintain a reasonably safe environment on campus.

Though the University is progressive with its policies, programs, and education, it is up to each one of us to live with a sense of awareness and use reasonable judgement when living, working or visiting on campus.



PREPARATION OF THE ANNUAL SECURITY REPORT AND DISCLOSURE OF CRIME STATISTICS

The University of South Carolina Beaufort Police Department prepares this report to comply with the Jeanne Clery Disclosure of Campus Security and Crime Statistics Act using information maintained by the University Police, information provided by other University offices and information provided by local law enforcement agencies, if available, surrounding both campuses. Each of these offices provides updated policy information and crime data.

This report provides statistics for the previous three years concerning reported crimes that occurred on campus, in certain off-campus buildings or property owned, leased or controlled by the University of South Carolina Beaufort. This report also includes institutional policies concerning campus security, such as policies regarding sexual assault, alcohol and other drugs.

The University of South Carolina Beaufort distributes a notice of the availability of this ASR by October 1 of the previous year. Anyone, including prospective students and employees, may obtain a paper copy of this report by contacting the University of South Carolina Beaufort Police at (843) 208-8912 or 13 South Campus Drive, Bluffton, SC. The ASR can also be viewed and downloaded at

https://www.uscb.edu/public_safety/clery_report.html.

In the event the current ASR requires any substantial changes or updates to policies after publication, the ASR will be republished with a note explaining the change(s) and any reason for the changes the USCB Community will be notified through the USCB email system.

The ASR is compiled by the Department of Public Safety with input from the Department of Housing and Judicial Affairs, The Department of Student Activities, CSAs and local Law Enforcement agencies.

The University of South Carolina Beaufort Department of Public Safety

The Department of Public Safety (https://www.uscb.edu/public_safety/index.html) operates as a fully certified law enforcement agency. The University Police provide high-quality, professional crime prevention, protection and law enforcement services to maintain and promote the safety and security for the University and its associated locations. The primary objective of the University Police is to provide a safe, healthy environment that enhances the campus learning experience and complements the University's educational

mission. The department provides full-service police protection to the campus community. The University Police is a fully independent law enforcement agency, reporting to the Vice Chancellor for Finance and Operations and is responsible for law enforcement, criminal investigations, emergencies, and campus awareness education.

The University Police Officers are sworn and certified South Carolina Police Officers with comprehensive arrest powers in the State of South Carolina. University Police Officers have the authority to enforce all state laws, Beaufort County ordinances, and University rules and regulations. The University Police Officers are appointed and commissioned as State Constables by the Governor of South Carolina as provided by Title 23, Chapter 1, Article 60, Code of Laws of South Carolina, 1976, as amended. As such, they are also empowered with full police powers to enforce the laws of South Carolina, including the powers of arrest, anywhere in the state.

The University Police have worked with federal, state, county and municipal law enforcement agencies to investigate matters of mutual interest. The University Police participates in intelligence sharing associations with all area law enforcement agencies.

The Department has enjoyed a successful professional association with local and state prosecutors, the court system, insurance and other private investigators, and other regulatory agencies. University Officers work closely with the Beaufort, Bluffton, and Hardeeville Police Departments, the Beaufort and Jasper County Sheriff's Office and the local contingent of the State Law Enforcement Division to handle any incidents that occur off-campus.

Public Safety Officers also patrol the campus to assist the campus community. Public Safety Officers are not Police Officers and they do not have arrest powers although they can write campus parking tickets. Public Safety Officers are tasked with monitoring activity on campus, opening and closing buildings, providing limited motor vehicle assistance, safety escorts, and controlling access at the residential areas of campus.



The University Police Officers and Public Safety Officers patrol the campus 24 hours a day by motor vehicle, golf cart and on foot. Officers are in radio communication with each other and the University Police Communications Center. The communications center is

manned 24 hours a day, 7 days a week. The communications center is responsible for taking telephone requests for service, dispatching Officers, and monitoring alarm and video systems.

The USCB Police Department has state of the art smart security cameras that cover multiple areas of all three campus. All public safety personnel may be reached by calling (843) 208-8912 (non-emergencies), or (843) 208-8911 (emergencies). The USCB Police Station is located in the Beaufort Dorm, 1st Floor, 13 South Campus Drive for the Bluffton Campus. The USCB Police Station at the Beaufort Campus is located in the Center for Arts on the 1st Floor. The USCB Police Station at the Hilton Head Campus is located in the Hilton Head Campus Building on the 1st Floor.

Statistics detailing the on-campus occurrence of murder/non-negligent manslaughter, negligent manslaughter, sexual assaults, robbery, arson, aggravated assault, burglary, motor vehicle theft, hate crimes, domestic violence, dating violence and stalking for the most current year as well as statistics for the two preceding years are maintained by the USCB Police and documented in the ASR. Statistics on arrests for violations of alcohol or drug abuse as well as weapons violations are also gathered and reported in the ASR. Clery incidents that are 'Unfounded' are also reported in the ASR.

The Police Department keeps statistical information on these crimes as well as any other felonies and misdemeanors (including traffic violations).



USCB Public Safety Sections

The **Administration Section** is responsible for the overall direction, development, and supervision of the Public Safety Department. The areas of responsibility for this section include primary administration, management, planning and research, budget preparation and management, recruitment and hiring, public information and general orders development.

The **Patrol Section** provides patrol functions 24 hours a day, seven days a week, for the protection of persons and property. This section consists of professional men and women dedicated to protect and serve the University of South Carolina Beaufort community. Each officer has completed training mandated by the State of South Carolina and is sworn to uphold the laws of the state. In addition, these officers are commissioned as State Constables with state-wide authority.

Patrol officers provide a variety of law enforcement services including responding to calls for service, taking reports, conducting preliminary investigations, monitoring security of University property, responding to emergency incidents, minor traffic accident investigations, and security at special events.

Training

USCB PD's training coordinator is responsible for ensuring continuing training and education for all University Police. Each Officer is trained annually on Active Shooter Response, Force Continuum, firearms and diversity training each calendar year. The Training Coordinator is Corporal Brittany Bradham located at the USCB Police Department, 13 South Campus Drive, Bluffton, South Carolina 29909, bradhab@uscb.edu, (843) 208-8911.



Emergency Management

It is the policy of the University of South Carolina Beaufort to safeguard the USCB community and facilities against natural, human caused and technological hazards that threaten the safety and security of the University by establishing procedures for communication, command and control, effective coordination and use of institutional and community resources. USCB's Emergency Management Coordinator is Mr. William Winn, located at the Public Safety Office, 13 South Campus Drive, Bluffton, South Carolina 29909, wwinn@uscb.edu, (843) 208-8914.

Emergency Operations Plan link: https://www.uscb.edu/public_safety/docs/Emergency-Operations-Plan_5-22-18.pdf

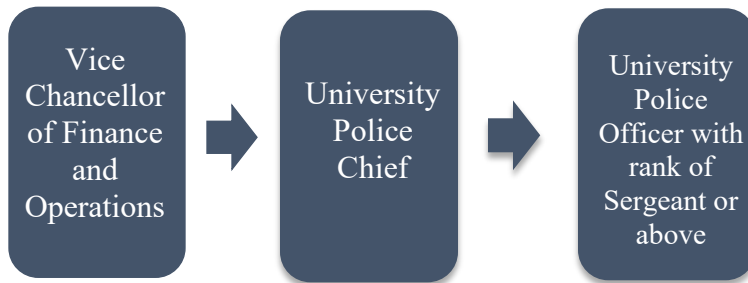
EMERGENCY NOTIFICATION (SHARK ALERT) & TIMELY WARNINGS

Alerting the Campus Community

In an effort to provide timely notice to the campus community in the event of a crime that may pose a serious or ongoing threat to members of the community, the University Police Department issues a crime alert called a "Shark Alert". USCB will, without delay, ensure that notifications and warnings can be transmitted quickly to all USCB students, faculty and staff, and taking into account the safety of the community, determine the content of the notification and initiate the Shark Alert system, unless issuing the Shark Alert will, in the professional judgement of the responsible authorities, compromise efforts to assist a victim or to contain, response to or otherwise mitigate the emergency. Your safety is our primary concern, and we will make every attempt to keep you informed.

In the event that a situation arises, either on or off campus, that in the judgment of the Chief of University Police or the designated command authority, constitutes an ongoing or continuing threat, the University Police, with the assistance of other appropriate departments, will confirm the emergency or dangerous situation prior to sending out an

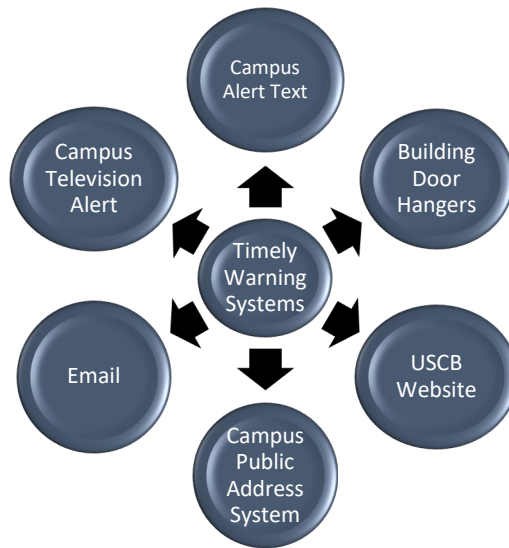
emergency notification. The listed personnel below or their designees are authorized to enact any notification method within the EAS.



After confirmation of the emergency, several factors will be considered to determine which segment(s) of campus will be notified through EAS.

The EAS will utilize an appropriate communication medium(s) and will consider the following: type of hazard, potential life and property safety issues, how quickly the notification needs to be received, who specifically and how many need to be notified, and the capabilities/limitations of the medium. These criteria will also be utilized to determine the content of the notification and the medium(s) used to deliver the message.

The EAS is comprised of a variety of mass notification mediums (i.e. text messages, warning announcements, email, etc.) It is important to note that no one system is capable of reaching everyone, everywhere, and every time. Each communication method has strengths, weaknesses, and limitations. Each system is tested at least once annually, as such, it is valuable to consider an emergency communication system that utilizes multiple delivery methods to ensure a greater coverage of the intended recipients and redundancy. In the event that a notice or warning is necessary, several methods have been identified to distribute information in multiple formats to allow the rapid dissemination of information to the widest number of our students, faculty, staff, and visitors as possible. All students, staff, and faculty are signed up for text messages, emails, and phone calls via the EAS through VIP. The various elements of the timely warning system are below.



Events that qualify for emergency notifications include, but are not limited to, the following:

- Severe Weather Warning
- Natural Disaster
- Structure Fire
- Dangerous or Serious Crime in Progress or other Police Emergency
- Active Shooter
- Suspicious Person Alert
- Bomb Threat
- Power Outage
- Chemical/Nuclear/Biological Spill or Other Hazardous Materials Incident
- Airplane Crash

Severe Weather & Emergency Management

Hurricane: If a hurricane warning is issued that may affect the University, an evacuation of the housing area and or University closing may be necessary. Plans are in place to evaluate

all circumstances before an evacuation decision is made. Once an evacuation order has been issued, the University will notify campus residents to evacuate to appropriate shelters. After the storm, the University Chief of Police and facilities management will inspect the situation and determine if it is safe for students to return to their residence hall. In the event of a hurricane evacuation, USCB will be closed and secured. No one is to enter any Campus until a reopening announcement is broadcast. As long as telephone service is available, you can contact (843) 208-8000 for updates.

Tornados: A tornado watch means that conditions are favorable for tornado activity.

Tornado warning means that a tornado has been detected in the area. Audible alerts will sound on campus.

The point of contact for the early warning systems is the Emergency Management Coordinator, William Winn at wwinn@uscb.edu.

EMERGENCY RESPONSE AND EVACUATION PROCEDURES

Emergency Management at the University of South Carolina Beaufort

The Department of Public Safety is responsible for the Emergency Operations Plan (EOP). This plan is designed to be an all-hazards disaster response and emergency management plan that complies with the Federal Emergency Management Agency (FEMA) guidelines for Higher Education that includes planning, prevention, preparedness, and mitigation, response, and recovery actions.

Our priorities are:

- Life Safety, infrastructure integrity, and environmental protection during an emergency
- Coordination with University departments to write, maintain, test, and exercise the EOP
- Cooperation, Integration, and Mutual Aid with local, state and federal planning, response, and public safety agencies and their ERPs.

Drills, Exercises and Training

Annually, USCB conducts an emergency management exercise to test emergency procedures. The scenarios for these exercises change annually and include several departments from the University as well as local response partners.

To ensure the University's Emergency Management Plans remain current and actionable, USCB will conduct an Emergency Management Exercise annually at a minimum. These exercises may include tabletop drills or full-scale emergency response exercises. USCB conducts after-action reviews of all emergency management exercises. We invite you to view the Emergency Operations Plan at:

https://www.uscb.edu/public_safety/docs/Emergency-Operations-Plan_5-22-18.pdf

Emergency Notification

USCB is committed to ensuring the campus community receives timely, accurate, and useful information in the event of a significant emergency or dangerous situation on campus or in the local area that poses an immediate threat to the health and safety of campus community members. USCB uses the Emergency Notification/Shark Alert or Timely Warning system. The Shark Alert system can be used to send emergency messages rapidly at the outset of the occurrence of an incident. The University uses the following protocols when issuing an emergency notification. You may also check the University status at

<https://www.uscb.edu/>

Procedures Used to Notify the Campus Communities

In the event of a situation that poses an immediate threat to members of the campus community, USCB has various systems in place for communicating information quickly. Some or all of these methods of communication may be activated in the event of an emergency. These methods of communication include the mass notification system Shark Alert, the University's e-mail system, and verbal announcement utilizing the warning and alert system

Confirming the Existence of a Significant Emergency and Initiating the Emergency Notification System

The Department of Public Safety and/or other campus first responders may become aware of a critical incident or other emergency situation that potentially affects the health and/or safety of the campus community. Usually, University Police become aware of these situations when they are reported to the University Police or upon discovery during patrol or other assignments.

Once University Police confirm that there is, in fact, an emergency or dangerous situation that poses an immediate threat to the health or safety of some or all members of the campus community, University Police will notify supervisors within the Department of Public Safety or other authorized University office to issue an emergency notification.

The University's authorized representatives will immediately initiate all or some portions of the University's emergency notification system. If, in the professional judgement of the University Police, issuing a notification potentially compromises efforts to assist a victim or to contain, respond to, or otherwise mitigate the emergency, the University may elect to delay issuing an emergency notification. As soon as the condition that may compromise efforts is no longer present, the University will issue the emergency notification to the campus community.

SECURITY OF AND ACCESS TO UNIVERSITY FACILITIES

Except for student residential areas, most of the University facilities are open to the community during day and evening hours. When the University is officially closed, buildings are secured and only faculty, staff and pre-approved students with proper identification are admitted.

Only those persons having legitimate business with the University or its members, members of the University community and their invited guests are permitted in a building.

The University reserves the right to exclude all persons not conforming to acceptable behavior standards from the premises. Those who disregard this warning are considered in violation of criminal trespass (under South Carolina code provisions) and are liable for prosecution.

University Police Officers may serve verbal or written trespass notices to persons posing a threat to the community and may make immediate arrests of persons in secure areas for which they have no legitimate business. If a person served with a prior trespass notice reappears on campus, or if a person is found in a posted facility with no legitimate purpose in that building, he or she is subject to immediate arrest.

Residence Halls

At USCB, the safety of our on-campus residents is of great importance to us. Because of this, all residents living in the residence hall are given access to their room as well as their building. Individuals not residing in a particular building do not have access to it unless a resident of that building escorts them. University Police also conduct regular checks of the residence hall areas.

Housing Staff, Residence Life Coordinators (RLC), and Resident Assistants (RA) also enforce security measures in the residence halls and work with residents to achieve a community of respectful of individual and group rights and responsibilities. More comprehensive information can be obtained by visiting https://www.uscb.edu/student_life/housing/index.html.

Important Information

Do you ever get the feeling something is not right? Call the University Police at (843) 208-8911 (Bluffton Campus), (843) 521-3189 (Beaufort Campus) or (843) 208-4911 (HHI Campus) and make a report. It may not be anything or it may be a crime about to happen. Enter the number of the University Police into your cell phone.

Here are some suggestions to keep you safe while studying or working at the University:

- When working late, make sure doors are locked
- Avoid using stairs in remote areas of the buildings
- Do not prop doors open
- Keep belongings in an area that can be locked, such as a desk or cabinet
- Do not hold doors open for strangers when the building is closed for the evening
- Let others know where you are when working late

- Use Police Escorts to walk with you to your vehicle or residence hall
- Think of the “what ifs” and have a plan in mind
- Do not be distracted while walking or jogging (headphones)

Office staff should have a plan in place for emergencies such as angry or volatile customers or domestic violence situations. Contact the USCB Police Department for assistance with your plans.

Classrooms

The buildings that contain the academic classrooms are within designated patrol sectors and are patrolled twenty-four hours per day, seven days a week on the Bluffton and Beaufort Campuses.

Libraries and Other Public Buildings

Many areas of the University are open to the public. Extra attention is given to these areas in the routine patrol plan as well as the policy for the individual buildings. All areas frequented by students on campus are staffed with University personnel who are instructed on the best method of contacting the police department. These instructional presentations are conducted as needed or generally on an annual basis.

Athletic Facilities

Before, during and after athletic contests, University Police are placed on the premises to insure a safe environment. Security measures are customized for the activity to be held. University Police Officers are frequently present at all University functions.

Parking Lots

High visibility lighting (conformed to national standards) are utilized to increase safety, and most parking areas have installed CCTV cameras placed in conspicuous locations to monitor their respective parking areas. People using the lots are encouraged to report any suspicious activity to University Police. The lots are also patrolled by the University Police.

General Campus

In addition to the routine patrol plan of the University Police, additional patrols are utilized during events and other highly attended events. These patrols are designed to exhibit a

concentrated police presence in areas of the campus where the event is occurring. Off-duty University Police personnel, at the request of organizations sponsoring events, provide security at activities on campus and at University sponsored events throughout the community.

Security Considerations for the Maintenance of Campus Facilities

At USCB, landscaping and outdoor lighting are designed for safety and security. Sidewalks are designed to provide well-traveled, lighted routes from parking areas to buildings and from building to building. The University buildings and grounds are maintained to provide a safe environment for all who come to the University. A variety of personnel from the Maintenance, Housing, and the USCB PD work together to ensure all components that comprise the safety system are operational. This includes exterior lighting, fire and smoke detection systems, and maintenance of landscaping, sidewalks and traffic control. If you observe a safety issue, please report it to USCB PD, Housing or Maintenance so corrective action can be initiated. Safety issue requests may be filed utilizing <https://helpdesk.uscb.edu/> and selecting either maintenance or public safety to address the issue.

Please report any security concerns to the University Police.

Housing: (843) 208-8722

(843) 208-8911 (Bluffton): (843) 812-8186 (Beaufort): (Hilton Head) 843 208-4911



CAMPUS SECURITY POLICIES, CRIME PREVENTION & SAFETY AWARENESS PROGRAMS

It should be noted that violent crime on campus is rare. The most prevalent crime our community experiences is theft. Generally, valuable items left unattended in vehicles or in



residence halls are the prime targets. Care should be taken to lock residence hall rooms and remove valuables from vehicles. It is also noteworthy to remember that several areas around our campus are open to the public. The most prominent of these is the Library and it is common to see non-students in these areas. Care should be taken in these areas to keep personal property under close watch. Textbooks, cell phones, calculators, and laptop computers are very desirable

because they are easily sold. University Police regularly addresses the community in the form of Safety Presentations designed to educate our constituents about methods of personal safety. These presentations cover several topics:

- Residential Safety: methods of securing your living space both on campus and off campus.
- Parking Area Safety; precautions useful in preventing theft and vandalism of your vehicle as well as insuring your personal safety in and around parking lots.

- Campus Safety; General and specific methods of personal protection. Detailing areas that are safe for our community and identifying tools available to enhance personal safety.
- Active Shooter Response: Preparing the faculty, staff, and students of how to respond in an active shooter situation.
- Sexual Assault Prevention: A general lecture on personality traits of those who perpetrate sexual aggression. Identification of resources available to our community for dealing with such aggression.
- Rape Aggression Defense (RAD) : An accredited PEDU, 1 credit course of self-defense for women only. Taught by nationally certified instructor from USCBPD.
- Safety Escort Service: University Police officials are available to escort faculty, staff, students and visitors to and from areas on campus by contacting University Police at 208-8912.
- The University Police also assists in providing safety presentations to incoming freshman through the University 101 program. To get more information about these programs or to schedule a program, contact University Police at (843) 208-8912.



TITLE IX Coordinator

Persons who desire to register complaints of harassment and discrimination relative to Title IX of the Educational Amendments of 1972 should direct these complaints or other inquiries to the Title IX Coordinator at: Deonne Yeager (843) 208-8082 or email at deonne@uscb.edu. Located at the Bluffton Campus in the Campus Center #109, 65 University Parkway, Bluffton SC 29909. The Title IX Coordinator shall investigate the alleged violation of Title IX according to the policy set forth in the USCB Student Handbook, a copy of which is available at Student Services in the Hargray Building, 1 Campus Drive, Bluffton SC or <https://campuslife.uscb.edu/student-rights-and-responsibilities/title-ix-and-sexual-assault/index.html>

Sexual & Gender Violence

Introduction

USCB is committed to providing a safe learning and working environment, and in compliance with federal law has adopted policies and procedures to prevent and respond to incidents of sexual violence including sexual assault, domestic violence, dating violence and stalking. These guidelines apply to all students, faculty, staff, contractors and visitors.

Sexual Assault

Because of the nature of the crime, victims of sexual assault are afforded extra sensitivity and consideration. All police officers are trained in the investigation of sex offenses; however, these cases are referred to South Carolina Law Enforcement Division (SLED) for investigation. This training includes South Carolina statutory law, university philosophy and policy, support resources, victim sensitivity training and methods of successful investigation. After receiving a report of sexual assault, the University Police will:

- Dispatch Officers to the victim's location.
- Notify the Student Services Staff; the Title IX Coordinator and the South Carolina Law Enforcement Division as necessary.
- Contact the Victim Advocate who will assist with the following:
- Collaborate with an investigator with specialized training in the area of sexual assault and relationship violence.

USCB in collaboration with University Police can provide safety measures such as but not limited to the following

- Restraining orders and/or orders of protection.
- No Contact Orders
- Relocating the victim.
- Special parking arrangements.
- Transportation and escort provisions.
- Special arrangements for parents and/or witnesses in crisis situations.

All employees of the University Police will:

- Treat victims of sexual assault with courtesy, sensitivity and understanding;
- Act thoughtfully, without prejudging or blaming the victim;



- Inform a victim of services available both on and off campus; including notifying the Title IX coordinator
- Answer victims' questions and assist in explaining the criminal justice system; Keep victims informed on the progress of the case; and
- Withhold a victim's identifying information from the public and the press, in accordance with South Carolina law.

If you are raped or sexually assaulted, you should take the following steps:

- Get to a safe place.
- Call 911 or (843) 208-8911 immediately to reach the University Police or the appropriate local police agency. This does not obligate you to file charges or testify in court.
- Memorize as much detail as possible about the attacker.
- If you prefer not to call the police but you want to make it known that a sexual assault occurred, or you need crisis assistance , you may contact Assistant Vice

Chancellor of Student Development Deonne Yeager: (843)208-8082 Email: deonne@uscb.edu. Upon request, she will assist you in notifying University Police if you so desire.

- Do not bathe, douche, change clothes or rinse your mouth. These actions may destroy evidence.
- You may call and request medical transportation without divulging that you have been raped. Even if you choose not to become involved with the police, you should seek medical assistance at a Hospital or clinic.

When you report a campus sexual assault, you are not making a commitment to file charges or testify in court. By reporting the matter to the University Police, you can be assured of immediate physical protection and transportation to a medical facility.

Notification to students that the institution will change a victim's academic and living situations after an alleged sexual offense, if those changes are requested by the victim and are reasonably available.

Procedures for campus disciplinary action in cases of an alleged sexual offense, the accuser and the accused are entitled to the same opportunities to have others present during a disciplinary proceeding; and both must be informed of the outcome of any institutional disciplinary proceeding. The full code of conduct process is available on the University Website. <https://campuslife.uscb.edu/student-rights-and-responsibilities/student-code-of-conduct-non-academic/index.html>

Sanctions the institution may impose following a final determination of an institutional disciplinary proceeding regarding rape, or other forcible or non-forcible sex offenses; may include but not limited to, removal from Housing, Suspension, or Expulsion.

- The Federal Campus Sex Crimes Prevention Act requires institutions of higher education to issue a statement advising the campus community where law enforcement agency information provided by a state concerning registered sex offenders may be obtained. It also requires sex offenders already ordered to register

in the state to provide notice, in compliance with state law, to each institution of higher education in that state at which the person is employed, carries on a vocation, or is a student. In South Carolina, convicted sex offenders must register with the county Sheriff's office where they reside. Nonresident offenders entering a state for employment or as a student attending school who are required to register in their state of residence or who would be required to register under this section if a resident of South Carolina shall, within 10 days of accepting employment or enrolling in school in the state, be required to register pursuant to this section. The sex offender information can be found on the following websites:

- [Sex Offender Registry Website](#)
- [Attorney General Website](#)

VAWA - Campus Sexual Violence Elimination Act

USCB policies as well as the laws of the State of South Carolina strongly prohibit domestic violence, dating violence, sexual assault, and stalking. There are significant criminal and institutional sanctions for persons engaging in these activities. Students may be liable both on and off campus for violations for these acts under Title IX of the Education Amendments of 1972 20 U.S.C. § 1681 in which the accused only has a Preponderance of the Evidence standard in University Judicial Conduct proceedings arising from the report of violations. These violations may be made to the University Police at any time of day or night at (843) 208-8911 or the individual may contact the Title IX Coordinator (843) 208-8280 if they wish to make a report under that process, this can be done without involving the police if the person prefers. USCB will work to protect the confidentiality of victims during proceedings to the fullest degree allowable. Here are some SC state laws regarding sexual assault and consent:

- Submitting to coercion, especially of an aggravated nature, is not consent. If a person threatens to use force or violence to overcome the victim and the victim has reason to

believe that the assailant has the ability to carry out that threat, then he or she may comply with the assailant's demands out of fear. The assailant, if convicted, may receive up to 30 years in prison for using aggravated coercion.

- A person can receive up to 30 years in prison for forcing a victim to submit to sexual battery in the context of kidnapping, forcible confinement, robbery, burglary, extortion, or a similar offense.
- Consent cannot legally be given by someone who is intoxicated. A person can also receive up to 30 years in prison for sexually assaulting the victim after giving him or her controlled or intoxicating substance, such as alcohol or a “date rape” drug.
- A person may receive a sentence of up to 30 years in prison for sexually assaulting a victim despite knowing that the victim is mentally defective or incapacitated or physically helpless, meaning the victim may be intoxicated or have a mental or physical disability.
- Consent should never be assumed, even in the context of a marital relationship. An individual must have consent from his or her spouse in order to engage in sexual activity with him or her. If a person is convicted of spousal sexual battery, he or she may spend up to 10 years in prison.
- The legal age of consent in South Carolina is 16; NO person under this age may consent!!! Criminal sexual conduct with a minor; up to 30 years in prison (SC Code of Laws 16-3-655) Please visit <https://campuslife.uscb.edu/student-rights-and-responsibilities/title-ix-and-sexual-assault/sexual-assault.html#consent> for more information concerning USCB Policies and Procedures concerning sexual assault and affirmative consent.
- Harassment is a pattern of intentional, substantial and unreasonable intrusion into the private life of a targeted person that serves no legitimate purpose and causes the person or any reasonable person in his/her position to suffer mental or emotional distress. (SC Code of Laws 16-3-1700 (a))
- Stalking is a pattern of words, whether verbal, written or electronic, or a pattern of conduct that serves no legitimate purpose and is intended to cause and does cause a

targeted or reasonable person in the targeted person's position to fear: death of the person or a member of his/her family, assault upon the person or a member of his/her family, bodily injury to the person or a member of his/her family, criminal sexual contact on the person or a member of his/her family, kidnapping of the person or a member of his/her family or damage to the property of the person or a member of his/her family. (SC Code of Laws 16-3-1700 (c))

- Hazing; it is unlawful for a person to intentionally or recklessly engage in acts which have a foreseeable potential for causing physical harm to a person for the purpose of initiation or admission into or affiliation with a chartered or non-chartered student, fraternal, or sorority organization. Fraternity, sorority, or other organization for purposes of this section means those chartered and non-chartered fraternities, sororities, or other organizations operating in connection with a school, college, or university. (SC Code of Laws 16-3-510)
- Sexual Assault is "Sexual Battery" meaning without consent of all persons involved; sexual intercourse, cunnilingus, fellatio, anal intercourse, or any intrusion, however slight, of any part of a person's body or of any object into the genital or anal openings of another person's body, except when such intrusion is accomplished for medically recognized treatment or diagnostic purposes. Criminal sexual conduct in the first degree is a felony punishable by imprisonment for not more than 30 years. (SC Code of Laws 16-3-652/653/654)
- Domestic Violence is defined as unlawful to cause physical harm or injury to a person's own household member or offer or attempt to cause physical harm or injury to a person's own household member with apparent present ability under circumstances reasonably creating fear of imminent peril. A household member is defined as (1) a spouse; (2) a former spouse; (3) persons who have a child in common; or (4) a male and female who are cohabiting or formerly have cohabited. (SC Code of Laws 16-25-20)
- Dating Violence is defined as violence committed by a person "who is or has been in a social relationship of a romantic or intimate nature with the victim"; and "where the existence of such a relationship shall be determined based on a consideration of

the length of the relationship, the type of relationship, and the frequency of interaction between the persons involved in the relationship.” 20 U.S.C. 1152 (f)(1). In South Carolina offenses that do not fall under Domestic Violence, Sexual Assault, or Stalking, are covered under “Assault and Battery” which may involve the unlawful nonconsensual touching of the private parts of a person, either under or above clothing, with lewd and lascivious intent; or offers or attempts to injure another person with the present ability to do so, these crimes may carry up to 20 years imprisonment (SC Code of Laws 16-3-600).

Resources for Victims:

- **South Carolina Coalition Against Domestic Violence and Sexual Assault (SCCADVASA)** is a statewide coalition made up of the 23 domestic violence and sexual assault advocacy programs in South Carolina. Since 1981, SCCADVASA has been a leader in representing the critical needs of survivors and their families.
<http://www.sccadvasa.org/>
- **RAINN (Rape, Abuse, Incest National Network)** - <http://www.rainn.org>
The nation's largest anti-sexual assault organization that provides a free, 24-hour phone hotline: 800-656-HOPE(4673) and a free, confidential, and secure online hotline.
- **It's On Us** - <http://itsonus.org> A national campaign recently rolled out by the White House, It's on Us strives to teach individuals to:
recognize that non-consensual sex is sexual assault.
identify situations in which sexual assault may occur.
intervene in situations where consent has not or cannot be given.
to create an environment in which sexual assault is unacceptable and survivors are supported.
- **National Sexual Assault Hotline** 1-800-656-4673
- **USCB Counseling:** (counseling@uscb.edu), (843) 208-8375
 - Monday through Friday, 8:30am to 5:00pm 2nd floor of the Library in the Student Success Center

- The University of South Carolina Beaufort actively complies with the "South Carolina Campus Sexual Assault Information Act" SECTION 59-105-30. Purpose.
 - “The serious nature and consequences of sexual assault and the particular problems caused by sexual assault within a campus community prompt the General Assembly to encourage institutions of higher learning to develop, with input from students, faculty, and staff, a comprehensive sexual assault policy to address prevention and awareness of sexual assault and to establish procedures that address campus sexual assaults. The General Assembly further encourages institutions of higher learning to make all reasonable efforts to support a student who is the victim of a sexual assault in a full report of the sexual assault to appropriate law enforcement authorities, including institutional and local police, and to make all reasonable efforts to provide assistance to and to cooperate with the student as the report is investigated and resolved.”
- The University of South Carolina Beaufort partners with Hopeful Horizon to assist students.

Hopeful Horizon’s 24 Hour Support Line is 843-770-1070 or 800-868-2632. The website for Hopeful Horizon is <https://www.hopefulhorizons.org/>



Victims Rights

If you have been a victim of sexual violence and decide to report the incident at the University, you can expect that:

- You will **be treated with dignity and respect and in a non-judgmental manner.**
- You will **be connected to campus and community resources** that can assist victims of sexual violence (including available mental health services).
- You will be **offered assistance in notifying proper authorities and will not be discouraged from filing a report.**
- You will **be afforded the opportunity to request immediate on-campus housing relocation, transfer of classes, or other steps** to prevent unnecessary or unwanted contact to an alleged assailant.

- Should you choose to pursue action against an alleged assailant, the incident will be **investigated and adjudicated** by appropriate criminal and/or University personnel.
- You **may invite an advisor of your choice** to accompany you through the University disciplinary proceedings (if applicable).
- You **will be notified of the outcome** of related University discipline proceedings (if applicable).

USCB Counseling Resources

- USCB Counseling is located inside the Student Success Center, 2nd floor of the library on the Bluffton Campus. To schedule an appointment contact them at counseling@uscb.edu
- USCB Counseling center is open Monday- Friday 8:30 am- 5:00 pm.

Emergency Contacts & Resources

EMERGENCY 911 or (843) 208-8911

University Police (843) 208-8912

University Counselor (Weekdays 8:30 – 5pm) (843) 208-8375

University Housing (Weekdays 8:30 – 5pm) (843) 208-8722

Title IX Coordinator (843) 208-8280

Coastal Carolina Hospital - Local (843) 784-8000

Beaufort Memorial Hospital- Local (843) 522-5269

Hilton Head Regional Hospital - Local (843) 681-6122

24-Hour Mental Health CRISIS INTERVENTION - 1-833-364-2274

Hopeful Horizons 24-Hour Crisis Hotline 1-843-770-1070

National Suicide Prevention Hotline 1-800-273-8255

National Sexual Assault Hotline 1-800-656-4673

Students of Concern

Purpose of the Students of Concern Committee

At USCB, we want to create a Community of Caring in which the university community demonstrates concern for the well-being of others. With this goal in mind, we have created a 'Students of Concern' committee with the purpose of promoting the safety, security, and success of our students. We're asking the university community for assistance in identification of students experiencing serious difficulties which may be threatening to the safety and security of themselves or others or threatening their personal and academic success. Such students can be referred to the 'Students of Concern' committee for further assessment and support services. If you need to report a student of concern- view this form:

Students of Concern Report

Refer a student exhibiting the following behaviors:

1. Threat to Safety and Wellbeing – Immediate Threats to Life
 - a) Talk of, or concern that a student may harm themselves.
 - b) Severely erratic behavior that disrupts normal proceedings of University students, faculty, or staff such as: threats of weapon on campus, significant inappropriate disruption to community, potential for safety being compromised. (If threat is imminent please contact USCB Police or call 911)
2. Threat to Personal and Academic Development
 - a) Student is regularly not attending classes.
 - b) Student is isolating self, exhibiting signs of depression and/or anxiety.
 - c) Marked change in behavior or academic performance.

Examples of Threats to Safety, Well-being or Academic Performance

- Self-isolating and/or exhibiting signs of depression or anxiety
- Marked change in behaviors or academic performance
- Threats of weapon on campus, significant disruption to community or potential for safety is compromised

- Stopped attending class (other academic concerns please submit through Academic Alert Process)
- Erratic behavior that disrupts normal proceedings of university students, faculty or staff
- Experiencing difficulties as a result of COVID-19, including but not limited to: financial hardship, lack of internet and computer access, illness, caretaking of someone who is ill, instability in the home, etc.

How to talk with someone in emotional distress:

Show that you care, ask questions and listen carefully.

- “I’m concerned about you and noticed you haven’t been sleeping, eating, going to class, etc.”
- “How are you feeling?”
- Reflect back their feelings and paraphrase: “What I hear you say is that you are in a great deal of pain and feel hopeless.”
- “I’m glad you called.”
- Listen with respect. Individuals in distress want understanding and care.

Get help. Explore options. Offer resources.

- “What would help now?” “Who can I call or who usually helps?” “How can I help?”
- Get assistance. Avoid trying to be the only lifeline for this person. Seek out resources even if it means breaking a confidence.
- “How would you feel about seeing the Campus counselor? Let’s call right now. I’ll walk over with you to see the counselor.”
- USCB Counseling:
 - Counseling@uscb.edu (843) 208-8375
 - Monday through Friday, 8:30am to 5:00pm 2nd floor of the Library in the Student Success Center
- National Suicide Prevention Lifeline 1-800-273-8255
- After hours Local Mental Health Crisis Intervention: 1-833-364-2274
- Call 911 OR (843) 208-8911 if this is a University EMERGENCY.

Drug and Alcohol Resources

- South Carolina's new Spanish-language health and addiction hotline, Tu Apoyo, is here to help, providing guidance, resources and referrals to those experiencing a new or worsening mental-health or addiction issue. Call: 1-833-TU-APOYO (1-833-822-7696), 8:30am to 5:00pm, Monday – Friday, excluding state holidays. For more information, visit: <https://scdmh.net/16626-2/>.
- Beaufort County Alcohol and Drug Abuse Services provides individual and group counseling services and resources (also links to virtual local AA and NA meetings) <https://www.beaufortcountysc.gov/alcohol-and-drug/index.html>
<https://www.beaufortcountysc.gov/alcohol-and-drug/coronavirus.html>
- South Carolina Alcoholics Anonymous: <http://www.area62.org/>
- SAMHSA's National Helpline (aka the Treatment Referral Routing Service): 1-800-662-HELP (4357) or TTY: 1-800-487-4889 is a confidential, free, 24/7/365 information service, in English or Spanish, for individuals and family members facing mental and/or substance use disorders. This service provides referrals to local treatment facilities, support groups and community-based organizations. Callers can also order free publications and other information:
<https://www.samhsa.gov/find-help/national-helpline>
- Links to Addiction/Recovery Smartphone Apps: <https://www.rehabs.com/smartphone-apps-for-recovery/>
- NIDA (National Institute on Drug Abuse) COVID-19 Resources for People in Recovery/Addiction: <https://www.drugabuse.gov/related-topics/covid-19-resources>
- For information on USCB's biennial review of Alcohol and Drug Abuse Prevention programs, please contact, Deonne Yeager at deonne@uscb.edu.

Additional Resources

- [Journal Prompts](#) to help you discover the impacts of COVID-19 on your life and the world.
- Are you wondering what you are feeling right now? Do you feel wound-up tight, extra emotional, grumpy, overwhelmed, and/or angry? What we are feeling is grief and loss. Take the time to read this [excellent article](#) about what we are feeling and learn how to manage the emotions.
- Mental Health Wellness Tips for Quarantine - check-out [these tips](#) for establishing your new normal during this uncertain time.
- Check out these [5 Mindfulness Exercises](#) to help you refocus, relax and settle.
- Take a break from your online classes and try this [Grounding with Your 5 Senses](#) exercise.
- [Coping with Stress and Anxiety Amidst COVID-19](#)
- Adjusting your Study Habits for Online Learning - Check out this great [resource](#) to help you adjust your learning and study habits to fit online learning.

Missing Student Policies

This policy establishes a framework aimed at assisting the University in locating residential students who are reported missing. A student shall be considered missing when they are absent and determined on a case by case basis and upon the totality of the circumstances. All reports of missing students shall be directed to the University Police Officer on duty. University Police and the Vice Chancellor for Student Development shall make the determination if the student is missing in accordance with this policy. All students shall have the opportunity to identify an individual to be contacted by USCB if the student is determined to be missing. If the missing student is under 18 years of age, the University is required to notify the parent or guardian within 24 hours of determination that the student is missing. University Police will notify an appropriate authority no later than 24 hours after a student is determined missing. The Vice Chancellor for Student Development shall have the ability to make this policy and emergency guidelines available to residential students and to collect the pertinent contact information. The safety of our students is of paramount importance to the University, keeping them informed of these safety policies is just one of the steps in furthering the goal of making USCB as safe an institution as possible.

Missing Student Procedure and Emergency Guidelines

At the beginning of each academic year, the University will inform students residing in campus housing that the University will notify either a parent or an individual selected by the student not later than 24 hours after the time the student is determined to be missing. This will include the following:

- Students have the option of identifying an individual to be contacted by the University not later than 24 hours after the time the student has been determined to be missing. Students can register this confidential contact information through the Housing Office.

- If the student is under 18 years of age, and not an emancipated individual, the University is required to notify a custodial parent or guardian not later than 24 hours after the time the student is determined to be missing.
- The University will notify the appropriate law enforcement agency not later than 24 hours after the time that the student is determined to be missing.
- If University Police or law enforcement personnel have been notified and make a determination that a student who is the subject of a missing person report has been missing for more than 24 hours and has not returned to campus, the University will initiate the emergency contact procedures in accordance with the student's designation.

The University will follow this notification procedure for a missing student who resides in University housing. Once University Police receive a missing student report via any source, the following offices will be notified:

1. University Police Chief
2. Vice Chancellor for Student Affairs
3. Vice Chancellor for Finance and Operations
4. Housing Office

Any official missing person report relating to this student shall be referred immediately to the USCB PD. If the USCB PD, after investigating the official report determine the student has been missing for more than 24 hours, USCB will contact the individual identified by the student, the custodial parent or legal guardian if the student is under 18 and not emancipated, or local law enforcement if these do not apply.

Upon notification from any entity that a residential student may be missing, USCB Police may use any of the following resources to assist in locating the student. These resources may be used in any order and combination.

- The Housing Office may be asked to assist in physically locating the student by keying into the student's assigned room and talking with known associates.
- University Police may search on campus public locations to find the student (library, cafeteria, etc).
- University Police may issue a picture to assist in identifying the missing student.

- University Police and the Vice-Chancellor for Student Affairs may try to contact known friends, family, or faculty members for last sighting or additional contact information.
- Students or academic departments may be contacted to seek information on last sighting information.
- University Police may review card access logs to determine last use of the card and track the card for future uses.
- University Police may access vehicle registration information for vehicle location and distribution to authorities.
- Computer Services/IT may be asked to review use of the University computing systems.
- Any indication of foul play, the local police department will immediately be contacted for assistance.
- The University will notify a custodial parent or guardian, within 24 hours of a determination that the resident student, under the age of 18 and not emancipated, is missing.

Crime and Fire Log

The University of South Carolina Beaufort Police maintain a combined Crime and Fire Log of all incidents, criminal incidents, alleged criminal incidents, and fire incidents reported to the Department. The USCB PD publishes the Crime and Fire Log, Monday-Friday, when the University is opened for normal operations. The log is available 24 hours per day to members of the public. This log identifies the date/time the incident occurred, date/time reported, type, case number, location and status/disposition/nature of the fire. This information is located at the USCB PD Offices located in the Beaufort Residence Hall, 1st Floor, 13 South Campus Drive.

USCB POLICIES GOVERNING ALCOHOL AND OTHER DRUGS

Alcohol and Drug Policies

The University recognizes, supports, and enforces all laws related to alcohol and other illegal drugs. South Carolina state statutes prohibit certain activities regarding alcoholic beverages or drugs. Convictions for these violations of South Carolina law could result in fines, loss of driver's license and imprisonment.

USCB is concerned about the abuse of alcohol and the use of illegal substances on all campuses.

The University is in compliance with the Drug Free School Act of 1989. University sanctions could include penalties ranging from counseling or educational programming to suspension/expulsion from the University.

Drug Policies: The unauthorized possession, use, manufacture, sale, or distribution of any counterfeit, illegal, dangerous, “designer,” or controlled drug or other substance is prohibited. This includes prescription medications. Violating any other provision of the Student Code of Conduct while under the influence of any illegal or illegally obtained drug is also a violation of this policy (Refer to the University Drug Policy). The possession of drug paraphernalia is also prohibited (i.e., pipes, bongos, blunts). Any dilute, late, missed, forged, or failed university required drug screen will constitute a violation of this policy.

Alcohol Policies: The University, as a matter of policy, prohibits student consumption of beer, wine and distilled spirits in or at any University owned or controlled facility. This policy is based on a concern for the welfare of all members of the University community and is in keeping with the laws of the State of South Carolina, which state that, the possession, consumption and distribution of alcoholic beverages by persons under the age of 21 is illegal. The University Police Department is very concerned about students’ improper use of alcohol and the illegal use of drugs. Our employees work very closely with the Office of Housing & Judicial Affairs. to educate the student population concerning the responsible use of alcohol.

It is unlawful to be under the influence of, use, possess, distribute, sell, offer, agree or represent to sell narcotics, hallucinogens, dangerous drugs, or controlled substances, except as where permitted by law.

Possession of Drug Paraphernalia S.C. 44-53-391 & Simple Possession of Marijuana S.C. 44-53-370 (d) (4) is punishable by up to 30 days in jail. Possession of Cocaine S.C. 44-53-391 is punishable by up to 3 years imprisonment. Distribution of Drugs within Proximity or a School, S.C.44-53-445 is a felony punishable by up to 10 years imprisonment.

It is unlawful to use, possess, sell, give, transfer, serve or permit alcohol to be served to anyone under the age of 21. Minor in Possession Alcohol S.C. 63-19-2450(A) & Transfer

Alcoholic Beverage to Underage Persons S.C. 61-6-4070 is punishable by up to 30 days in jail.

For more details, please refer to the University's policy on alcohol and drugs at:

<https://campuslife.uscb.edu/student-development/housing-and-student-conduct/USCB%20Housing%20Policies.pdf>

https://www.uscb.edu/human_resources/policies_procedures/pdfs/general/208-Alcohol-Policy.pdf (Faculty/Staff)

Weapons Possession

Firearms and dangerous weapons of any type are not permitted in the residence halls or other University facilities, except when carried by law enforcement officers within their jurisdictions. Possession of a firearm or dangerous weapon on campus is a felony under South Carolina Code of Laws 16-23-430 punishable by up to 5 years imprisonment. Intentional use, possession or sale of firearms or other dangerous weapons by students are strictly forbidden and violate University policy and state law. Violations can result in arrest and confiscation and destruction of the weapon, ammunition or prohibited item.



Other weapons prohibited on campus include BB guns, air guns, hatchets, knives (blades 2" or longer), bows/arrows, explosives, fireworks, dangerous/noxious chemical mixtures, incendiary devices, propelled missiles or other dangerous substances.

Approval for temporary possession or storage is considered on a case by-case basis and must be made to the University Police.

ANNUAL DISCLOSURE OF CRIME STATISTICS

Jeanne Clery Disclosure of Campus Security Policy and Campus Crime Statistics Act (20 USC § 1092(f)) requires colleges and universities across the United States to disclose information about crime on and around their campuses. The University of South Carolina Beaufort Police Department maintains a close relationship with all Police Departments and Sheriff's Offices where USCB owns or controls property to ensure that crimes reported to these law enforcement agencies that involve the University are brought to the attention of the USCB Police. The University of South Carolina Police Department collects the crime

statistics disclosed in the Clery charts through a number of methods. Police Officers enter all reports of crime incidents made directly to the department through a computer database/records management system. After an officer enters the report in the system, a department supervisor reviews the report to ensure it is appropriately classified in the correct crime category. The Department periodically examines the data to ensure that all reported crimes are recorded in accordance with the crime definitions outlined in the FBI Uniform Crime Reporting Handbook and the FBI National Incident-Based Reporting System Handbook (Sex Offenses only). In addition to the crime data that the University Police Department maintains, the statistics below also include crimes that are reported to various campus security authorities, as defined in this report. The statistics reported here generally reflect the number of criminal incidents reported to the various authorities. The statistics reported for the sub categories on liquor laws, drug laws and weapons offenses represent the number of people arrested or referred to campus judicial authorities for respective violations, not the number of offenses documented.

Definitions of Reportable Crimes: Federal Definitions

Primary Crimes:

Murder/Manslaughter

Federal Definition – defined as the willful killing of one human being by another.

Manslaughter by Negligence

Federal Definition – defined as the killing of another person through gross negligence.

Sex Offenses

Federal Definition – defined as any sexual act directed against another person, without the consent of the victim, including instances where the victim is incapable of giving consent.

Rape

Federal Definition – defined as penetration, no matter how slight, of the vagina or anus with any body part or object, or oral penetration by a sex organ of another person, without consent of the victim. This offense includes the rape of both females and males.

Fondling

Federal Definition – defined as the touching of the private body parts of another person for the purpose of sexual gratification, without the consent of the victim, including instances where the victim is incapable of giving consent because of his/her age or because of his/her temporary or permanent mental incapacity.

Incest

Federal Definition – defined as non-forcible sexual intercourse between persons who are related to each other within the degrees wherein marriage is prohibited by law.

Statutory Rape

Federal Definition – defined as sexual intercourse with a person who is under the statutory age of consent (16 in SC)

Robbery

Federal Definition – defined as taking or attempting to take anything of value from the car, custody, or control of a person or persons by force or threat of force or violence and/or by putting the victim in fear.

Aggravated Assault

Federal Definition – defined as an unlawful attack by one person upon another for the purpose of inflicting severe or aggravated bodily injury. This type of assault usually is accompanied by the use of a weapon or by means likely to produce death or great bodily harm. Including assaults or attempts to kill or murder, poisoning (including date-rape drugs), with a dangerous or deadly weapon, maiming, mayhem, assault with explosives and assault with disease.

Burglary

Federal Definition – defined as the unlawful entry of a structure to commit a felony or theft.

Motor Vehicle Theft

Federal Definition – defined as the theft or attempted theft of a motor vehicle.

Arson

Federal Definition – defined as any willful or malicious burning or attempt to burn, with or without intent to defraud, a dwelling house, public building, motor vehicle or aircraft, personal property of another, etc.

Hate Crimes

Federal Definition – defined as a criminal offense that manifest evidence that the victim was intentionally selected because of the perpetrator’s bias against the victim.

Larceny/Theft

Federal Definition – defined as pocket picking, purse snatching, shoplifting, theft from a building, theft from a motor vehicle, theft of motor vehicle parts or accessories, and all other larceny.

Simple Assault

Federal Definition – defined as an unlawful physical attack by one person upon another where neither the offender displays a weapon, nor the victim suffers obvious severe or aggravated bodily injury involving apparent broken bones, loss of teeth, possible internal injury, severe laceration or loss of consciousness.

Intimidation

Federal Definition – defined as unlawfully placing another person in reasonable fear of bodily harm through the use of threatening words and/or conduct but without displaying a weapon or subjecting the victim to actual physical attack.

Destruction/Damage/Vandalism or Property (except Arson)

Federal Definition – defined as to willfully or maliciously destroy, damage, deface, or otherwise injure real or personal property without the consent of the owner or the person having custody or control of it.

Categories of Prejudice:

Race – A preformed negative attitude toward a group of persons who possess common physical characteristics, i.e., color of skin, eyes, and/or hair; facial features, etc. genetically transmitted by descent and heredity which distinguish them as a distinct division of humankind, i.e., Asian, Black, African American, White.

Gender – A preformed negative opinion or attitude toward a person or group of persons based on their actual or perceived gender, (i.e., male or female)

Gender Identity – A preformed negative opinion or attitude toward a person or group of persons based on their actual or perceived gender identity, (i.e., bias against transgender or gender non-conforming individuals).

Religion – A preformed negative opinion or attitude toward a group of persons who share the same religious beliefs regarding the origin and purpose of the universe and the existence or nonexistence of a supreme being, i.e. Catholics, Jews, Protestants, Muslims, Atheists.

Sexual Orientation – A preformed negative opinion or attitude toward a group of persons based on their actual or perceived sexual orientation.

Ethnicity – A preformed negative opinion or attitude toward a group of people whose members identify with each other, through a common heritage, often consisting of a common language, common culture (often a shared religion) and/or ideology that stresses their common ancestry.

National Origin – A preformed negative opinion or attitude toward a group of people based on their actual or perceived country of birth.

Disability – A preformed negative opinion or attitude toward a group of persons based on their physical or mental impairments, whether such disability is temporary or permanent, congenital or acquired by heredity, accident, injury, advanced age or illness.



Geography Definitions from the Clery Act

On-Campus is defined as:

- (1) Any building or property owned or controlled by an institution within the same reasonably contiguous geographic area and used by the institution in direct support of or in a manner related to the institution's educational purposes, including residence halls

- (2) Any building or property that is within or reasonably contiguous to the area, that is owned by the institution but controlled by another person, is frequently used by students and supports institutional purposes (such as a food or retail vendor). This includes parking facilities and dining facilities that are physically attached to and accessed directly from residence halls.

Non-Campus Building or Property is defined as:

- (1) Any building or property owned or controlled by a student organization that is officially recognized by the institution or registered with the institution.
- (2) Any building or property owned or controlled by or registered with an institution that is used in direct support of or in relation to the institution's educational purposes, is frequently used by students, and is not within the same reasonably contiguous geographic area of the institution.

Public Property is defined as all public property, including thoroughfares, streets, sidewalks, and parking facilities, that is within the campus or immediately adjacent to and accessible from the campus.

All reportable data is included in the 2020, 2021 and 2022 data charts for the following locations:

- University of South Carolina Beaufort – Bluffton Campus, Bluffton, South Carolina
- University of South Carolina Beaufort – Beaufort Campus, Beaufort, South Carolina
- University of South Carolina Beaufort – Hilton Head Campus, HHI, South Carolina

Crime statistics do not include crimes that occur in privately owned homes or businesses within or adjacent to the campus boundaries.

Clery Statistics for 2020, 2021 & 2022

The statistics are reported in accordance with the Uniform Crime Reporting procedures and the Jeanne Clery Disclosure of Campus Security Policy and Campus Crime Statistics Act January 1 – December 31. This data has been compiled from the USCB Police Department Crime Log, the University Office of Housing and Judicial Affairs, other University Campus Security Authorities and reports furnished by the Beaufort County Sheriff's Office, Beaufort Police Department, Hardeeville Police Department and the Jasper County Sheriff's Office.

Criminal Offenses Reporting Table (Bluffton Campus)

OFFENSE	Year	GEOGRAPHIC LOCATION				
		On-Campus Property	Residential Facilities	Non-Campus Property	Public Property	Total
Murder/Non-Negligent Manslaughter	2020	0	0	0	0	0
	2021	0	0	0	0	0
	2022	0	0	0	0	0
Manslaughter by Negligence	2020	0	0	0	0	0
	2021	0	0	0	0	0
	2022	0	0	0	0	0
Rape	2020	0	1	0	0	1
	2021	0	2	0	0	2
	2022	0	1	0	0	1
Fondling	2020	0	0	0	0	0
	2021	0	0	0	0	0
	2022	0	0	0	0	0
Incest	2020	0	0	0	0	0
	2021	0	0	0	0	0
	2022	0	0	0	0	0
Statutory Rape	2020	0	0	0	0	0
	2021	0	0	0	0	0
	2022	0	0	0	0	0
Robbery	2020	0	0	0	0	0
	2021	0	0	0	0	0
	2022	0	0	0	0	0
Aggravated Assault	2020	0	0	0	0	0
	2021	0	0	0	0	0
	2022	0	0	0	0	0
Burglary	2020	0	0	0	0	0
	2021	0	1	0	0	1
	2022	0	0	0	0	0
Motor Vehicle Theft	2020	0	0	0	0	0
	2021	0	0	0	0	0
	2022	0	0	0	0	0
Arson	2020	0	0	0	0	0
	2021	0	0	0	0	0
	2022	0	0	0	0	0

Arrests and Disciplinary Referrals Reporting Table (Bluffton Campus)						
OFFENSE	Year	GEOGRAPHIC LOCATION				
		On-Campus Property	Residential Facilities	Non-Campus Property	Public Property	Total
Arrests: Weapons:Carrying, Possessing, ETC.	2020	1	0	0	0	1
	2021	0	0	0	0	0
	2022	0	0	0	0	0
Disciplinary Referrals: Weapons: Carrying, Possessing, ETC.	2020	0	0	0	0	0
	2021	0	0	0	0	0
	2022	0	0	0	0	0
Arrests:Drug Abuse Violations	2020	0	0	0	0	0
	2021	2	2	0	0	4
	2022	2	2	0	0	4
Disciplinary Referrals: Drug Abuse Violations	2020	2	17	0	0	19
	2021	1	6	0	1	8
	2022	4	2	0	0	6
Arrests: Liquor Law Violations	2020	0	0	0	0	0
	2021	1	1	0	0	2
	2022	0	0	0	0	0
Disciplinary Referrals: Liquor Law Violations	2020	3	98	0	0	101
	2021	0	49	0	1	50
	2022	1	49	0	0	50

VAWA Offenses Reporting Table (Bluffton Campus)						
OFFENSE	Year	GEOGRAPHIC LOCATION				
		On-Campus Property	Residential Facilities	Non-Campus Property	Public Property	Total
Domestic Violence	2020	0	0	0	0	0
	2021	0	0	0	0	0
	2022	0	0	0	0	0
Dating Violence	2020	0	0	0	0	0
	2021	0	0	0	0	0
	2022	1	5	0	0	6
Stalking	2020	0	1	0	0	1
	2021	0	0	0	0	0
	2022	2	1	0	0	3

Hate Crimes Reporting Table (Bluffton Campus)						
OFFENSE	Year	GEOGRAPHIC LOCATION				
		On-Campus Property	Residential Facilities	Non-Campus Property	Public Property	Total
Race	2020	0	0	0	0	0
	2021	0	0	0	0	0
	2022	0	0	0	0	0
Gender	2020	0	0	0	0	0
	2021	0	0	0	0	0
	2022	0	0	0	0	0
Religion	2020	0	0	0	0	0
	2021	0	0	0	0	0
	2022	0	0	0	0	0
Sexual Orientation	2020	0	0	0	0	0
	2021	0	0	0	0	0
	2022	0	0	0	0	0
Ethnicity	2020	0	0	0	0	0
	2021	0	0	0	0	0
	2022	0	0	0	0	0
National Origin	2020	0	0	0	0	0
	2021	0	0	0	0	0
	2022	0	0	0	0	0
Disability	2020	0	0	0	0	0
	2021	0	0	0	0	0
	2022	0	0	0	0	0
Gender Identity	2020	0	0	0	0	0
	2021	0	0	0	0	0
	2022	0	0	0	0	0

Unfounded Crimes Table (Bluffton Campus)						
Unfounded Crimes	Year	GEOGRAPHIC LOCATION				
		On-Campus Property	Residential Facilities	Non-Campus Property	Public Property	Total
Rape	2020	0	1	0	0	1
	2021	0	1	0	0	1
	2022	0	0	0	0	0
None	2020	0	0	0	0	0
	2021	0	0	0	0	0
	2022	0	0	0	0	0
None	2020	0	0	0	0	0
	2021	0	0	0	0	0
	2022	0	0	0	0	0

Criminal Offenses Reporting Table (Beaufort Campus)						
OFFENSE	Year	GEOGRAPHIC LOCATION				
		On-Campus Property	Residential Facilities	Non-Campus Property	Public Property	Total
Murder/Non-Negligent Manslaughter	2020	0	0	0	0	0
	2021	0	0	0	0	0
	2022	0	0	0	0	0
Manslaughter by Negligence	2020	0	0	0	0	0
	2021	0	0	0	0	0
	2022	0	0	0	0	0
Rape	2020	0	1	0	0	1
	2021	0	0	0	0	0
	2022	0	0	0	0	0
Fondling	2020	0	0	0	0	0
	2021	0	0	0	0	0
	2022	0	0	0	0	0
Incest	2020	0	0	0	0	0
	2021	0	0	0	0	0
	2022	0	0	0	0	0
Statutory Rape	2020	0	0	0	0	0
	2021	0	0	0	0	0
	2022	0	0	0	0	0
Robbery	2020	0	0	0	0	0
	2021	0	0	0	0	0
	2022	0	0	0	0	0
Aggravated Assault	2020	0	0	0	0	0
	2021	0	0	0	0	0
	2022	0	0	0	0	0
Burglary	2020	0	0	0	0	0
	2021	0	0	0	0	0
	2022	1	0	0	0	1
Motor Vehicle Theft	2020	0	0	0	0	0
	2021	0	0	0	0	0
	2022	0	0	0	0	0
Arson	2020	0	0	0	0	0
	2021	0	0	0	0	0
	2022	0	0	0	0	0

Arrests and Disciplinary Referrals Reporting Table (Beaufort Campus)						
OFFENSE	Year	GEOGRAPHIC LOCATION				
		On-Campus Property	Residential Facilities	Non-Campus Property	Public Property	Total
Arrests: Weapons:Carrying, Possessing, ETC.	2020	0	0	0	0	0
	2021	0	0	0	0	0
	2022	0	0	0	0	0
Disciplinary Referrals: Weapons: Carrying, Possessing, ETC.	2020	0	0	0	0	0
	2021	0	0	0	0	0
	2022	0	0	0	0	0
Arrests:Drug Abuse Violations	2020	0	0	0	0	0
	2021	0	0	0	0	0
	2022	0	0	0	0	0
Disciplinary Referrals: Drug Abuse Violations	2020	0	0	0	0	0
	2021	0	0	0	0	0
	2022	0	0	0	0	0
Arrests: Liquor Law Violations	2020	0	0	0	0	0
	2021	0	0	0	0	0
	2022	0	0	0	0	0
Disciplinary Referrals: Liquor Law Violations	2020	0	4	0	0	4
	2021	0	4	0	0	4
	2022	0	0	0	0	0

VAWA Offenses Reporting Table (Beaufort Campus)						
OFFENSE	Year	GEOGRAPHIC LOCATION				
		On-Campus Property	Residential Facilities	Non-Campus Property	Public Property	Total
Domestic Violence	2020	0	0	0	0	0
	2021	0	0	0	0	0
	2022	0	0	0	0	0
Dating Violence	2020	0	0	0	0	0
	2021	0	0	0	0	0
	2022	0	0	0	0	0
Stalking	2020	0	0	0	0	0
	2021	0	0	0	0	0
	2022	0	0	0	0	0

Hate Crimes Reporting Table(Beaufort Campus)						
OFFENSE	Year	GEOGRAPHIC LOCATION				
		On-Campus Property	Residential Facilities	Non-Campus Property	Public Property	Total
Race	2020	0	0	0	0	0
	2021	0	0	0	0	0
	2022	0	0	0	0	0
Gender	2020	0	0	0	0	0
	2021	0	0	0	0	0
	2022	0	0	0	0	0
Religion	2020	0	0	0	0	0
	2021	0	0	0	0	0
	2022	0	0	0	0	0
Sexual Orientation	2020	0	0	0	0	0
	2021	0	0	0	0	0
	2022	0	0	0	0	0
Ethnicity	2020	0	0	0	0	0
	2021	0	0	0	0	0
	2022	0	0	0	0	0
National Origin	2020	0	0	0	0	0
	2021	0	0	0	0	0
	2022	0	0	0	0	0
Disability	2020	0	0	0	0	0
	2021	0	0	0	0	0
	2022	0	0	0	0	0
Gender Identity	2020	0	0	0	0	0
	2021	0	0	0	0	0
	2022	0	0	0	0	0

Unfounded Crimes Table (Beaufort Campus)						
Unfounded Crimes	Year	GEOGRAPHIC LOCATION				
		On-Campus Property	Residential Facilities	Non-Campus Property	Public Property	Total
Rape	2020	0	1	0	0	1
	2021	0	0	0	0	0
	2022	0	0	0	0	0
None	2020	0	0	0	0	0
	2021	0	0	0	0	0
	2022	0	0	0	0	0
None	2020	0	0	0	0	0
	2021	0	0	0	0	0
	2022	0	0	0	0	0

Criminal Offenses Reporting Table (Hilton Head Campus)						
OFFENSE	Year	GEOGRAPHIC LOCATION				
		On-Campus Property	Residential Facilities	Non-Campus Property	Public Property	Total
Murder/Non-Negligent Manslaughter	2020	0	0	0	0	0
	2021	0	0	0	0	0
	2022	0	0	0	0	0
Manslaughter by Negligence	2020	0	0	0	0	0
	2021	0	0	0	0	0
	2022	0	0	0	0	0
Rape	2020	0	0	0	0	0
	2021	0	0	0	0	0
	2022	0	0	0	0	0
Fondling	2020	0	0	0	0	0
	2021	0	0	0	0	0
	2022	0	0	0	0	0
Incest	2020	0	0	0	0	0
	2021	0	0	0	0	0
	2022	0	0	0	0	0
Statutory Rape	2020	0	0	0	0	0
	2021	0	0	0	0	0
	2022	0	0	0	0	0
Robbery	2020	0	0	0	0	0
	2021	0	0	0	0	0
	2022	0	0	0	0	0
Aggravated Assault	2020	0	0	0	0	0
	2021	0	0	0	0	0
	2022	0	0	0	0	0
Burglary	2020	0	0	0	0	0
	2021	0	0	0	0	0
	2022	0	0	0	0	0
Motor Vehicle Theft	2020	0	0	0	0	0
	2021	0	0	0	0	0
	2022	0	0	0	0	0
Arson	2020	0	0	0	0	0
	2021	0	0	0	0	0
	2022	0	0	0	0	0

Arrests and Disciplinary Referrals Reporting Table (Hilton Head Campus)						
OFFENSE	Year	GEOGRAPHIC LOCATION				
		On-Campus Property	Residential Facilities	Non-Campus Property	Public Property	Total
Arrests: Weapons: Carrying, Possessing, ETC.	2020	0	0	0	0	0
	2021	0	0	0	0	0
	2022	0	0	0	0	0
Disciplinary Referrals: Weapons: Carrying, Possessing, ETC.	2020	0	0	0	0	0
	2021	0	0	0	0	0
	2022	0	0	0	0	0
Arrests: Drug Abuse Violations	2020	0	0	0	0	0
	2021	0	0	0	0	0
	2022	0	0	0	0	0
Disciplinary Referrals: Drug Abuse Violations	2020	0	0	0	0	0
	2021	0	0	0	0	0
	2022	0	0	0	0	0
Arrests: Liquor Law Violations	2020	0	0	0	0	0
	2021	0	0	0	0	0
	2022	0	0	0	0	0
Disciplinary Referrals: Liquor Law Violations	2020	0	0	0	0	0
	2021	0	0	0	0	0
	2022	0	0	0	0	0

VAWA Offenses Reporting Table (Hilton Head Campus)						
OFFENSE	Year	GEOGRAPHIC LOCATION				
		On-Campus Property	Residential Facilities	Non-Campus Property	Public Property	Total
Domestic Violence	2020	0	0	0	0	0
	2021	0	0	0	0	0
	2022	0	0	0	0	0
Dating Violence	2020	0	0	0	0	0
	2021	0	0	0	0	0
	2022	0	0	0	0	0
Stalking	2020	0	0	0	0	0
	2021	0	0	0	0	0
	2022	0	0	0	0	0

Hate Crimes Reporting Table (Hilton Head Campus)						
OFFENSE	Year	GEOGRAPHIC LOCATION				
		On-Campus Property	Residential Facilities	Non-Campus Property	Public Property	Total
Race	2020	0	0	0	0	0
	2021	0	0	0	0	0
	2022	0	0	0	0	0
Gender	2020	0	0	0	0	0
	2021	0	0	0	0	0
	2022	0	0	0	0	0
Religion	2020	0	0	0	0	0
	2021	0	0	0	0	0
	2022	0	0	0	0	0
Sexual Orientation	2020	0	0	0	0	0
	2021	0	0	0	0	0
	2022	0	0	0	0	0
Ethnicity	2020	0	0	0	0	0
	2021	0	0	0	0	0
	2022	0	0	0	0	0
National Origin	2020	0	0	0	0	0
	2021	0	0	0	0	0
	2022	0	0	0	0	0
Disability	2020	0	0	0	0	0
	2021	0	0	0	0	0
	2022	0	0	0	0	0
Gender Identity	2020	0	0	0	0	0
	2021	0	0	0	0	0
	2022	0	0	0	0	0

Unfounded Crimes Table (Hilton Head Campus)						
Unfounded Crimes	Year	GEOGRAPHIC LOCATION				
		On-Campus Property	Residential Facilities	Non-Campus Property	Public Property	Total
None	2020	0	0	0	0	0
	2021	0	0	0	0	0
	2022	0	0	0	0	0
None	2020	0	0	0	0	0
	2021	0	0	0	0	0
	2022	0	0	0	0	0
None	2020	0	0	0	0	0
	2021	0	0	0	0	0
	2022	0	0	0	0	0

ANNUAL FIRE SAFETY REPORT FOR 2020, 2021 & 2022

The Higher Education Opportunity Act enacted on August 14, 2008, requires institutions that maintain on-campus student housing facilities to publish an annual fire safety report that contains information about campus fire safety practices and standards of the institution. The following report details all information required by this act for the University of South Carolina Beaufort.

Definitions

The following terms are used within this report. Definitions have been obtained from the Higher Education Opportunity Act:

On-Campus Housing – A student housing facility that is owned or controlled by the institution or is located on property that is owned or controlled by the institution and is within a reasonable contiguous area that makes up the campus.

Fire – Any instance of open flame or other burning in a place not intended to contain the burning or in an uncontrolled manner.

Fire Watch – A temporary measure intended to ensure continuous and systematic surveillance of a building or portion thereof by one or more qualified individuals for the purposes of identifying and controlling fire hazards, detecting early signs of unwanted fire, raising an alarm of fire and notifying the fire department.

NFPA – National Fire Protection Association

Residence Hall Fire Drills

Fire drills are conducted in all on-campus residence halls. Each fire drill is a supervised practice of a mandatory evacuation of a building for a fire.

University Housing

The University of South Carolina Beaufort takes fire safety very seriously and continues to enhance its programs to the university community through education, engineering and enforcement. Education programs are presented throughout the year, so the University community is aware of the rules and safe practices.

Fire Safety Systems

Every residence hall that is on campus is equipped with a NFPA standard 13 fire suppression system and a NFPA standard 72 fire alarm system that is monitored 24 hours a day, 7 days a week by the USCB Police Department and third party company Security Central. Each individual living space is equipped with smoke alarms and sprinklers. These devices are in the unit to warn residents of smoke and/or fire. The alarm must be unobstructed at all times for safety purposes. If the smoke detector is so sensitive that it constantly alarms or malfunctions in other ways, contact the University Police so we may inspect it and have the alarm company dispatched to determine the cause. Never tape over, cover, block disconnect, alter, remove or hang items from the sprinkler heads and fire alarm system devices to include smoke detectors. Violations will be reported to the Department of Housing and Judicial Affairs for disciplinary action.

The University contracts with a South Carolina licensed sprinkler contractor for annual testing and recertification of all fire sprinkler systems on campus. The technicians who maintain and test the fire alarms systems do so in accordance with the National Fire Protection Association (NFPA) standard 72. The University Police Fire Safety Officers also inspect fire extinguishers on a monthly basis during its inspection of campus buildings. Residence halls and Campus buildings are equipped with ABC fire extinguishers installed per NFPA 10.

The number of fire drills conducted in residence halls each year is in accordance with the requirements of the International Fire Code (IFC) of 4 per year. Typically, there are two fire drills in each residence hall per semester.

Smoking is prohibited in all University buildings, housing facilities, and the entire campus. University Housing trains all staff members annually on safety and security measures within the residence halls. Topics include: Emergency response procedures, fire and tornado safety responses, how to conduct safety checks, room entry procedures, how to report suspicious persons, door safety protocols, lock down procedures, general and personal safety – just to mention a few.

All incoming students will receive the training in University 101 as well as through training events given by the Residential Assistants (RAs).

Passive programs are offered on safety through housing bulletin boards, University 101 and other venues.

Fire Protection

Fire Protection is provided by the Bluffton Fire Department, Beaufort Fire Department and the Hilton Head Fire Department. For fire service call the University Police Department at (843) 208-8911 or Beaufort County Dispatch at 911. Beaufort County EMS provides advanced life support for emergencies occurring on campus. Fire Safety Officers with the University Police will conduct inspections for compliance of all University Buildings and On-Campus Student Housing, provides fire safety information and conducts fire safety programs including the four annual fire alarm drills for Campus Student Housing at the Palmetto Village Complex. These drills will be conducted at a reasonable hour as University Housing and the University Police do not plan fire drills for late night or early morning hours.

Fire Evacuation

Evacuation of any University building is mandatory whenever a fire alarm sounds. Sounding of fire alarms or tampering with fire safety equipment, including fire hoses, fire extinguishers, fire sprinklers and fire sprinkler piping, exit signs, emergency lighting, smoke detectors and the fire alarm systems is strictly prohibited.

The following list will give you some thoughts and ideas on how to prepare yourself in the event of an alarm:

- Familiarize yourself with the evacuation procedures for the building; locate the nearest exit and fire extinguishers.
- If you smell smoke or detect a fire, activate the nearest alarm and call (843) 208-8911 or 911 from a safe location.
- You must evacuate as soon as you hear the sound of an alarm in a University Building to include Residential buildings. (Drills are no exception)
- Evacuate as quickly as possible in an orderly manner, don't panic, push or shove.
- Choose a safe exit.
- If you see or smell smoke in a hall or stairway, use another exit.
- Never use elevators; always use the stairs.
- Before opening a door, check for warmth with the back of your hand.
- If the door is hot, leave the door closed, and stuff towels or clothes in the cracks and open a window and hang a white sheet to signal for help.
- If the door is not hot, open the door slowly (CAUTION: the doorknob may be hot) and be prepared to close it quickly if necessary.
- Confine the fire by closing doors as you leave.
- Help others evacuate.
- Pound on doors and check bathrooms as you leave.
- Offer assistance to individuals with physical disabilities.
- Be alert of suspicious persons or activity.
- Immediately report any vandalism or tampering with an alarm.
- Report to your Emergency Assembly Point and check in with your designated Building Manager.
- Report anyone who might be missing
- Faculty members are responsible for accounting for individuals enrolled and attending their classes.

All Faculty, Staff and Students should be familiar with where the fire extinguishers are located within their respective areas as well as how to properly use them. To correctly use a fire extinguisher, remember the acronym P.A.S.S. which stands for:

Pull the pin.

Aim the extinguisher nozzle at the base of the flames.

Squeeze the trigger while holding the extinguisher upright.

Sweep the extinguisher nozzle from side to side, covering the fire with the extinguishing agent.

COOKING AND KITCHENS

USCB residential rooms are equipped with fully equipped kitchens. Residents should make sure they are aware of all guidelines and restrictions as outlined in the University Housing Policy. All residents are urged to exercise extreme caution when cooking and should never leave anything unattended in the oven or on the stove.



**ANNUAL FIRE SAFETY REPORT
2020**

Residence Hall	# Fires	Cause	# Deaths	# Injuries	Cost	# Fire Drills	# Fire Extinguishers	Fire Alarms	Sprinklers
Beaufort	0	N/A	0	0	N/A	4	2	Yes	Yes
Colleton	0	N/A	0	0	N/A	4	1	Yes	Yes
Hampton	0	N/A	0	0	N/A	4	1	Yes	Yes
Jasper	0	N/A	0	0	N/A	4	2	Yes	Yes
May River	0	N/A	0	0	N/A	4	8	Yes	Yes
Okatee River	0	N/A	0	0	N/A	4	10	Yes	Yes
Combahee River	0	N/A	0	0	N/A	4	7	Yes	Yes
Broad River	0	N/A	0	0	N/A	4	9	Yes	Yes
Port Royal	2	Food	0	0	N/A	4	6	Yes	Yes
Grace White	0	N/A	0	0	N/A	4	3	Yes	Yes
Chechessee	0	N/A	0	0	N/A	4	7	Yes	Yes
Honors A	0	N/A	0	0	N/A	4	3	Yes	Yes
Honors B	0	N/A	0	0	N/A	4	3	Yes	Yes
Honors C	0	N/A	0	0	N/A	4	3	Yes	Yes
Honors D	0	N/A	0	0	N/A	4	3	Yes	Yes

**ANNUAL FIRE SAFETY REPORT
2021**

Residence Hall	# Fires	Cause	# Deaths	# Injuries	Cost	# Fire Drills	# Fire Extinguishers	Fire Alarms	Sprinklers
Beaufort	0	N/A	0	0	N/A	1	2	Yes	Yes
Colleton	0	N/A	0	0	N/A	1	1	Yes	Yes
Hampton	0	N/A	0	0	N/A	1	1	Yes	Yes
Jasper	0	N/A	0	0	N/A	1	2	Yes	Yes
May River	0	N/A	0	0	N/A	1	8	Yes	Yes
Okatee River	0	N/A	0	0	N/A	1	10	Yes	Yes
Combahee River	0	N/A	0	0	N/A	1	7	Yes	Yes
Broad River	0	N/A	0	0	N/A	1	9	Yes	Yes
Port Royal	0	N/A	0	0	N/A	1	6	Yes	Yes
Chechessee	0	N/A	0	0	N/A	1	7	Yes	Yes
Honors A	0	N/A	0	0	N/A	1	3	Yes	Yes
Honors B	0	N/A	0	0	N/A	1	3	Yes	Yes
Honors C	0	N/A	0	0	N/A	1	3	Yes	Yes
Honors D	0	N/A	0	0	N/A	0	3	Yes	Yes

**ANNUAL FIRE SAFETY REPORT
2022**

Residence Hall	# Fires	Cause	# Deaths	# Injuries	Cost	# Fire Drills	# Fire Extinguishers	Fire Alarms	Sprinklers
Beaufort	0	N/A	0	0	N/A	2	2	Yes	Yes
Colleton	0	N/A	0	0	N/A	2	2	Yes	Yes
Hampton	0	N/A	0	0	N/A	2	2	Yes	Yes
Jasper	0	N/A	0	0	N/A	2	2	Yes	Yes
May River	0	N/A	0	0	N/A	2	8	Yes	Yes
Okatee River	0	N/A	0	0	N/A	2	10	Yes	Yes
Combahee River	0	N/A	0	0	N/A	2	7	Yes	Yes
Broad River	0	N/A	0	0	N/A	2	9	Yes	Yes
Port Royal	0	N/A	0	0	N/A	2	6	Yes	Yes
Chechessee	0	N/A	0	0	N/A	2	7	Yes	Yes
Honors A	0	N/A	0	0	N/A	2	3	Yes	Yes
Honors B	0	N/A	0	0	N/A	2	3	Yes	Yes
Honors C	0	N/A	0	0	N/A	2	3	Yes	Yes
Honors D	0	N/A	0	0	N/A	0	3	Yes	Yes

Automated External Defibrillators (AEDs) on Campus

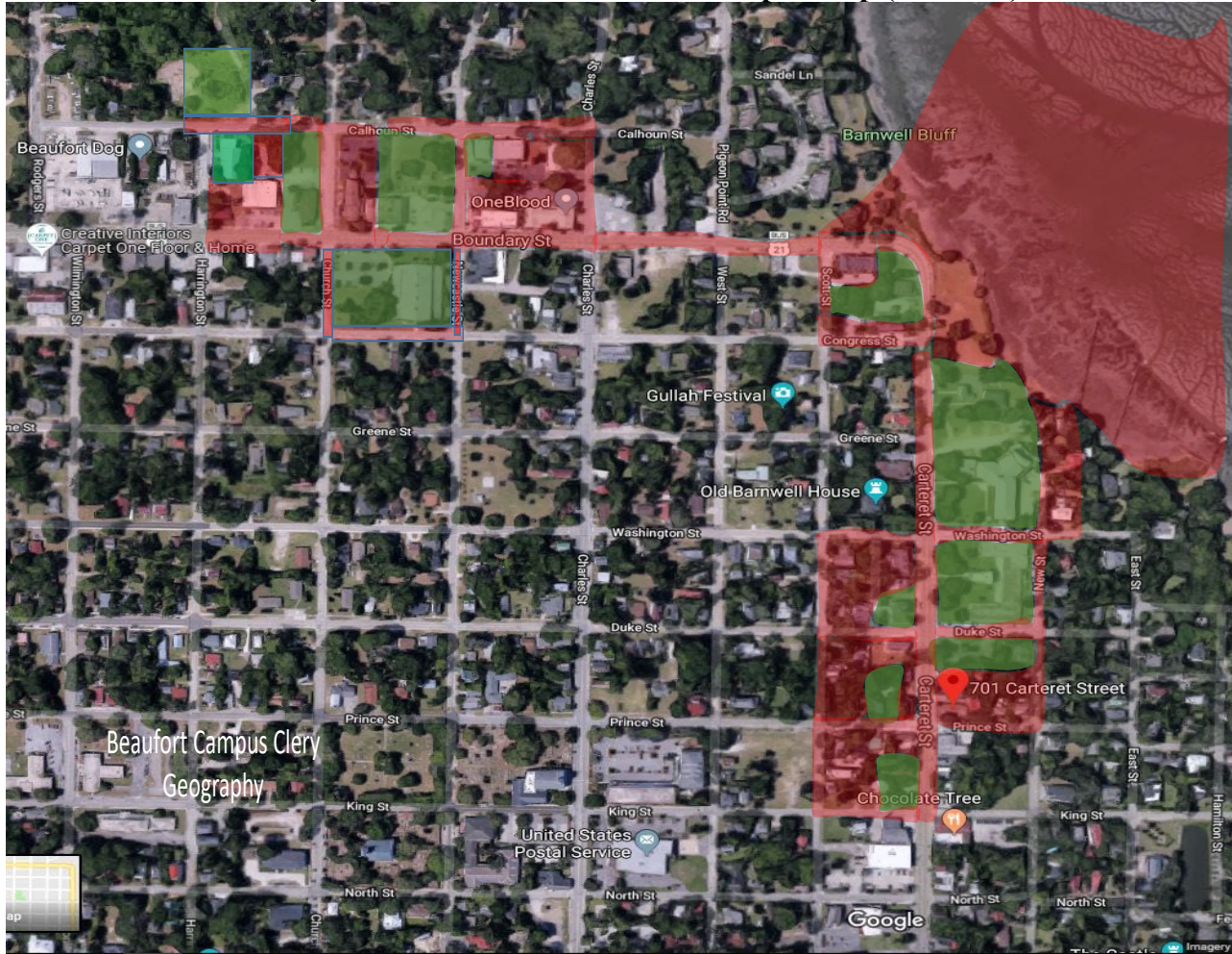
AEDs are located throughout the University in the Academic Areas. University Police Officers are trained in the utilization of the AEDs as well as CPR and first aid. The University Police Officers carry an AED during their patrols of the University.

University of South Carolina Beaufort Campus Map (Bluffton Campus)



Green – USCB Property
Red – Public Property

University of South Carolina Beaufort Campus Map (Beaufort)



University of South Carolina Beaufort Hilton Head Campus Map



Green – USCB Property
Red – Public Property

University of South Carolina Beaufort Hardeeville Athletic Complex Map



Green – USCB Property
Red – Public Property



